



"DELIVERING EXCELLENCE FROM EARTH TO INDUSTRY"

CONCRETE OVERLAYS REFERENCE GUIDE

Pro Bond Ultra

PRODUCT DESCRIPTION

Pro Bond Ultra is a commercial grade, multi-use, “just add water” concrete repair mix. Pro Bond Ultra can be troweled as a base coat with or without added aggregate to create slope. Pro Bond Ultra is used as a concrete repair material to fill, rebuild, repair and smooth spalling and damaged concrete areas before applying a top coat. Pro Bond Ultra is also a wearable surface and can function as a top coat itself. Pro Bond Ultra can go from feathered edge to 2 + inches deep. Pro Bond Ultra bonds easily to concrete substrates, polystyrene, brick, block and tile. Pro Bond Ultra is used as a base coat for waterfall, cliff face, and rock formations. For extreme bonding it is required to use Primer 100 prior to Pro Bond Ultra application. Available in 50 lb bags. 3,500- 4,000 PSI.



Pro Bond Ultra (50 lb bag)			
1/8"	1/2"	1"	2"
48 SF	12 SF	6 SF	3 SF

*Coverage chart depicts application thickness to square feet coverage

**Tech Data Sheets (TDS) and Safety Data Sheets (SDS) are available at www.consolidatedagg.com

MOST COMMON USES

- Back Fill
- Slope Creation
- Horizontal Concrete Repair on sidewalks, driveways, patios
- Broom Finish Top Coat

APPLICATION

Layer: Base Coat or Top Coat

Thickness: Feathered to 2"

Application Method:

3.5-4 quarts water: Troweled slope.

4-4.5 quarts water: Squeegee, broom.

Working Time: Avg. 30 min- 1 hour



PRODUCT DESCRIPTION

CPR- Concrete Patch and Repair is a high-performance, extremely fast-setting, no-shrink mix. It's used for general concrete repair from to 1/8" - 2". CPR is a polymerized hydraulic and Portland cement mix that can be troweled vertically or overhead, has superior bonding strength, and does not require a primer. CPR can be used in commercial or residential for concrete repairing and patching, doweling, and anchoring. Available in 50 lb bags. 5,000- 6,000 PSI.

Note: When applying horizontally prior to a secondary top coat application, do not feather the edges less than 1/4". CPR should not be used as a horizontal top coat.



CPR (50 lb bag)			
1/4"	1/2"	1"	2"
24 SF	12 SF	6 SF	3 SF

*Coverage chart depicts application thickness to square feet coverage

**Tech Data Sheets (TDS) and Safety Data Sheets (SDS) are available at www.consolidatedagg.com

MOST COMMON USES

- Spalling Repair
- Concrete Loading Docks
- Concrete Curbing
- Foundation Repair
- Retaining Walls

APPLICATION

Layer: Vertical Top Coat or Horizontal Base Coat

Thickness: 1/8" - 2"

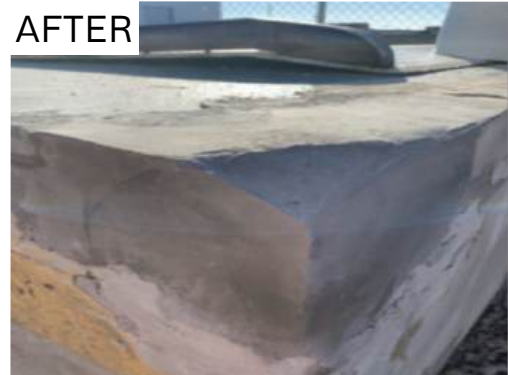
Application Method: Troweled over a dampened concrete surface

Working Time: Avg. 15 minutes. Approx. 30 minute initial cure.

BEFORE



AFTER



SwiftSet Self Leveler

PRODUCT DESCRIPTION

SwiftSet Self-Leveler is a fast setting (2-4 hours) and walk-able in (4- 6 hours), “just add water”, self-leveling base or top coat mix. It’s used to create smooth and level surfaces prior to the installation of various flooring types or repairing low spots in concrete substrates. SwiftSet creates a strong physical & chemical bond to a concrete substrate with the use of Primer 100. For pours 2” + deep, add aggregate. SwiftSet Self-Leveler is for indoor use only and dries to 6,000- 7,000 PSI. Available in 50 lb bags. The following averages vary by thickness, temp, etc.:

- Walk-able in 2-4 hours
- Floor Coverings in 4-8 hours



SwiftSet Self Leveler (50 lb bag)			
1/4"	1/2"	1"	2"
24 SF	12 SF	6 SF	3 SF

*Coverage chart depicts application thickness to square feet coverage

**Tech Data Sheets (TDS) and Safety Data Sheets (SDS) are available at www.consolidatedagg.com

MOST COMMON USES

- Concrete surface lifting
- Surface prep after hardwood, carpet or tile removal

APPLICATION

Layer: Base Coat or Top Coat

Thickness: 1/4" - 2"

Application Method: Poured and Porcupined over a Primer 100 prepped concrete surface.

Working Time: Avg. 10-15 minutes. Approx. 2-4 hours set time.



Stamp Mix

PRODUCT DESCRIPTION

Stamp Mix is a “just add water” polymer, fiber, aggregate and proprietary additive enhanced, professional concrete overlay mix. Specifically designed to be a decorative top-coat, Stamp Mix allows 2-6 hours of working time for stamping and carving when applied over concrete. Stamp mix is used in commercial and residential horizontal interior or exterior applications to achieve a realistic stamped or hand carved look of wood, stone, brick, pavers, tile or rock. It can be stained with our liquid colors and integrally colored with our colorpax. For extreme bonding it is required to use Primer 100 prior to Stamp Mix application. Available in gray or white base mix, 50 lb bags. 4,000-5,000 PSI.



Stamp Mix (50 lb bag)		
1/4"	3/8"	1/2"
24 SF	16 SF	12 SF

*Coverage chart depicts application thickness to square feet coverage

**Tech Data Sheets (TDS) and Safety Data Sheets (SDS) are available at www.consolidatedagg.com

MOST COMMON USES

- Stamped or Carved Horizontal Floors
- Concrete Decks
- Driveways
- Patios
- Pool Decks
- Sidewalks/Walkways

APPLICATION

Layer: Top Coat

Thickness: 1/4" - 1/2" Max.

3/8" being most common for stamping

Application Method: Gauge Rake, Trowel

Working Time: Avg. 2-6 hours (depending on application process, temperature, and thickness)



PRODUCT DESCRIPTION

Wall Mix is a just add water, polymer, fiber, aggregate and additive enhanced concrete overlay mix that allows 2-6 hours of working time for stamping or carving. Wall mix is perfect for vertical or overhead applications, it's 2x lighter than standard concrete or mortar mixes and can be applied from 1/4" up to 2" without sagging. Wall mix is used in commercial and residential vertical interior or exterior applications to stamp, hand carve and create stunning vertical custom stone finishes. It can be stained with our liquid colors and integrally colored with our colorpax. For extreme bonding it is required to use Primer 100 prior to Wall Mix application. Available in gray or white, 50 lb bags. 1,200 PSI.



Wall Mix (50 lb bag)			
3/8"	1/2"	3/4"	1"
24 SF	16 SF	12 SF	8 SF

*Coverage chart depicts application thickness to square feet coverage

**Tech Data Sheets (TDS) and Safety Data Sheets (SDS) are available at www.consolidatedagg.com

MOST COMMON USES

- Stamped, Hand Carved or Textured Exterior/ Interior Walls
- Decorative features (Boulders, Grotto, Cliff Face, Caves, Waterfalls, Fountains, Outdoor Kitchens, Fireplaces, Fire Pits)

APPLICATION

Layer: Vertical Top Coat

Thickness: 1/4" - 2"+

3/4" being the most common for stamping

Application Method: Trowel, Hawk & Trowel, Spray

Working Time: Avg. 2-6 hours (depending on application process, temperature, and thickness)



Smooth Coat

PRODUCT DESCRIPTION

Smooth Coat is a “just add water”, Portland cement, fine aggregate, proprietary additive, and heavy polymer enhanced concrete overlay mix. Smooth Coat allows 30 min- 1 hour of working time for hand troweling, magic troweling or spraying. Smooth Coat is used in commercial and residential interior or exterior applications to achieve a smooth base or top coat and as a texture coat, broom finish, knockdown, skip trowel or other texture look. For extreme bonding it is required to use Primer 100 prior to Smooth Coat application. Available in gray or white, 50 lb bags. 3,500- 4,000 PSI.



Smooth Coat (50 lb bag)		
1/16"	1/8"	3/16"
96 SF	48 SF	36 SF

*Coverage chart depicts application thickness to square feet coverage

**Tech Data Sheets (TDS) and Safety Data Sheets (SDS) are available at www.consolidatedagg.com

MOST COMMON USES

- Knock Down Finish
- Broom Finish
- Base Coat/ Stenciling Use
- Spray Texture

APPLICATION

Layer: Top Coat, Texture Coat, Base Coat

Thickness: 1/16" - 3/16" Max

Application Method: Hand Trowel, Magic Trowel

Working Time: Avg. 30 minutes- 1 hour
(depending on application process, temperature, and thickness)



Hairline Crack Fill

PRODUCT DESCRIPTION

Hairline Crack Fill is a “just add water”, primer-less, extreme bonding, high psi hairline and small crack fill with a working time of 20-30 minutes. Hairline Crack Fill comes in a 10 lb bucket for easy mixing and is applied to fill hairline to 1/8” dead cracks in concrete.

MOST COMMON USES

- Cracks in Concrete Driveways
- Sidewalks
- Patios
- Poured Foundation Wall

APPLICATION

Layer: Top Coat

Thickness: 1/8”

Application Method: Sponge or Hand Trowel.
Remove excess with a damp sponge that is not in the hairline crack.

Working Time: Avg. 20-30 minutes



Hairline Crack Fill (10 lb bucket)

1/8”

48 LF

*Coverage chart depicts application thickness to square feet coverage

**Tech Data Sheets (TDS) and Safety Data Sheets (SDS) are available at www.consolidatedagg.com



Primer 100

PRODUCT DESCRIPTION

Primer 100 is a premixed extreme bonding agent designed to bond any of our concrete overlay mixes to a stable Concrete or other Substrate. Primer 100 can also be applied to a properly prepped painted or sealed concrete, masonry, plaster, drywall, glass, glazed tile, Styrofoam or adverse substrate. Primer 100 is an EVA (Ethylene-Vinyl Acetate). Available in 1 gallon and 5 gallon buckets.



Primer 100 (1 or 5 gal)

700 - 1,000 SF

MOST COMMON USES

Applied as a bonding agent for:

- Pro Bond Ultra
- SwiftSet Self Leveler
- Wall Mix
- Stamp Mix
- Smooth Coat

APPLICATION

Layer: Primer Bond Coat

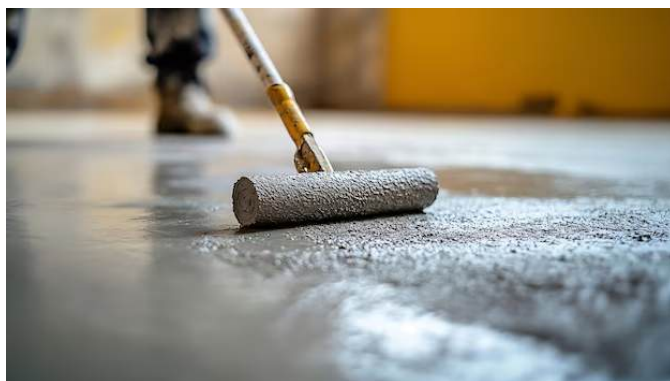
Thickness: Very Thin

Application Method: Roller, Brush, Spray

Working Time: Avg. 5- 15 minutes

*Coverage chart depicts application thickness to square feet coverage

**Tech Data Sheets (TDS) and Safety Data Sheets (SDS) are available at www.consolidatedagg.com



PRODUCT DESCRIPTION

Pro Seal is a UV Stable, non-yellowing, water-base, matte finish, 10% solids and low viscosity acrylic sealer. Pro Seal has excellent penetration and adhesion qualities when used on clean and unsealed concrete. Pro Seal goes on white and dry clear, is low VOC and compliant in all states. Pro Seal gives your jobs a natural matte look. Pro Seal can be applied on green or uncured concrete and overlays because it breaths and allows for out gassing. Pro Seal is commonly used with our Liquid Colors in a 1:6 ratio (1 part Liquid Color to 6 parts Pro Seal) for base and accent coloring. For antique coloring, use a 1:6:30 ratio (1 part Liquid Color, 6 parts Pro Seal, 30 parts water). Pro Seal is the reactive agent that draws the natural pigments into the concrete for long lasting coloration. Available in a 5 gallon bucket.



All Pro Seal (5 gal bucket)

800 - 1,000 SF

*Coverage chart depicts application thickness to square feet coverage

**Tech Data Sheets (TDS) and Safety Data Sheets (SDS) are available at www.consolidatedagg.com

MOST COMMON USES

- Base and Accent Coloring
- Antique Coloring

APPLICATION

Layer: Top Coat Matte Finish Sealer

Application Method: Sprayed using a pump sprayer or hand trigger spray bottle, cellulose sponge or brush.

Working Time: Avg. 10 to 20 minutes



Pro Seal Supreme

PRODUCT DESCRIPTION

Pro Seal Supreme is a UV stable, non-yellowing water based, semi-gloss finish, 20% solids, and low viscosity epoxy infused acrylic sealer. Pro Seal Supreme has excellent penetration and adhesion qualities when used on clean and unsealed concrete. Pro Seal Supreme goes on blue/ white and dries clear, is low VOC and compliant in all states. Pro Seal Supreme gives your jobs a beautiful Semi-Gloss look. Pro Seal Supreme is commonly used as a concrete sealer. Available in a 5 gallon bucket.



All Pro Seal (5 gal bucket)

800 - 1,000 SF

MOST COMMON USES

- A semi-gloss finish concrete sealer

APPLICATION

Layer: Top Coat Semi-Gloss Water Based Sealer

Application Method: Roll on with nap roller

Working Time: Avg. 10- 20 minutes

*Coverage chart depicts application thickness to square feet coverage

**Tech Data Sheets (TDS) and Safety Data Sheets (SDS) are available at www.consolidatedagg.com



Pro Seal 2500

PRODUCT DESCRIPTION

Pro Seal 2500 is a high gloss, 25% solids, acrylic solvent based concrete sealer. It has excellent penetration and adhesion qualities when used on clean and unsealed concrete. Pro Seal 2500 is UV stable, non-yellowing, and is a tough 100% acrylic sealer that will give your jobs a beautiful wet look that makes the colors “pop” and dry just a little darker and richer than our Pro Seal Supreme. Pro Seal 2500 is a true sealer but has the features and characteristics of a cure-and-seal. Concrete should be completely dry 24 to 48 hours for thin overlays and up to 28 days for ready-mix concrete, but with its enhanced features, you can apply Pro Seal 2500 earlier and it will act like a cure-and-seal and allow some breathing and out gassing. Pro Seal 2500 is clear in color and is 700 VOC, please ensure that it can be used in your state. Available in a 5 gallon bucket.



All Pro Seal (5 gal bucket)

800 - 1,000 SF

*Coverage chart depicts application thickness to square feet coverage

**Tech Data Sheets (TDS) and Safety Data Sheets (SDS) are available at www.consolidatedagg.com

MOST COMMON USES

- A high-gloss finish concrete sealer

APPLICATION

Layer: Top Coat High-Gloss Sealer

Application Method: Roll on with nap roller or can be sprayed using a “Chapin” Extreme type all metal sprayer.

Working Time: Avg. 15- 20 minutes before



Pro Release Agent

PRODUCT DESCRIPTION

Pro Release Agent is a bubblegum scented colorless liquid release agent specially formulated as a bond-breaker between freshly poured concrete and concrete stamps, texture skins, stencils and tools. Pro Release allows you to stamp concrete without the stamps or tools sticking to the concrete. Pro Release also creates a lubricating barrier that extends the life of the texturing tools by decreasing the friction between the concrete and the tools. Pro Release evaporates leaving no residue behind, meaning less clean-up and labor cost. This characteristic makes it perfect for both exterior and interior applications. Pro Release is ultra-low viscosity, which allows for easy spraying. VOC is less than 100 so it is compliant for most areas in the United States and Canada. Available in 5 gallon bucket.



Pro Release (5 gal bucket)

800 - 1,000 SF

*Coverage chart depicts application thickness to square feet coverage

**Tech Data Sheets (TDS) and Safety Data Sheets (SDS) are available at www.consolidatedagg.com

MOST COMMON USES

- Keeps stamps from sticking to the fresh concrete overlay surfaces while stamping

APPLICATION

Layer: Top Coat (mist the stamp and the wet concrete overlay surface before applying the stamp)

Application Method: Use trigger or pump sprayers

Working Time: Avg. 5- 10 minutes (evaporates with no residue)



Deck Seal

PRODUCT DESCRIPTION

Deck Seal is a water based, tintable, waterproofing sealer. Deck Seal is a 100% acrylic and urethane, insulating ceramic, that dries to a matte to semi-gloss finish. Deck Seal is a stand alone sealer for concrete, concrete pool decks, balconies, patios, and more. Deck Seal is tough, durable, flexible enough to withstand freeze/thaw conditions and is built for foot traffic, deck furniture and more. Deck Seal is low VOC, mildew resistant, UV stable, non-yellowing, and possesses excellent adhesion qualities. Deck Seal is not recommended for driveways.

Deck Seal Tint Colors are water based acrylic colorants that come in 8oz bottles and are pre-measured for color consistency when mixing with one full 5 gallon bucket of Deck Seal Waterproofing Sealer. Deck Seal Tint Pack Colors come in 9 beautiful colors.

MOST COMMON USES

- Patio
- Pool Deck
- Walkways

APPLICATION

Layer: Top Coat Tintable Waterproofing Sealer

Application Method: Roller or Paint Brush. For coloring mix at a 1:1 ratio (one 8 oz bottle of Deck Seal Tint Color to one 5 Gallon Bucket of Deck Seal Waterproofing Sealer)

Working Time: Avg. 15- 30 minutes



Deck Seal (5 gal bucket)

500 -750 SF

*Coverage chart depicts application thickness to square feet coverage

**Tech Data Sheets (TDS) and Safety Data Sheets (SDS) are available at www.consolidatedagg.com

Deck Seal Tint Colors (8 oz bottle)



*Please note that while we make every effort to ensure color accuracy in our marketing materials, the colors displayed may vary slightly due to differences in monitor settings, screen calibration, and printing processes. As a result, the final product may not match the exact color shown. We recommend reviewing physical samples, if available, before placing your order to ensure satisfaction with the final result.

PRODUCT DESCRIPTION

Liquid Colors are a blend of natural iron oxide pigments and water that come in 12 beautiful colors, packaged in 32 oz bottles. Liquid Colors are mixed with Pro Seal. The water based sealer is the reactive agent needed to carry the natural pigments deep into the concrete to give a lasting beautiful rich color. Liquid Colors are most commonly used for topical coloring applications.

MOST COMMON USES

- Topical Color of Concrete Overlays

APPLICATION

Layer: Topical Penetrating Coloring System

Application Method: Brush, Spray Bottle, Cellulose Sponge or Sprayer

Working Time: Avg. 30 minutes- 1 hour

Liquid Colors

Liquid Colors (32 oz bottle)

Dark Cypress	Charcoal Gray	Dove Gray
Bronze	Spanish Red	Cayenne
Mist Gray	Linen	Palace Beige
Persimmon	Dogwood	Dark Gray

*Please note that while we make every effort to ensure color accuracy in our marketing materials, the colors displayed may vary slightly due to differences in monitor settings, screen calibration, and printing processes. As a result, the final product may not match the exact color shown. We recommend reviewing physical samples, if available, before placing your order to ensure satisfaction with the final result.

Commonly Used With:



Stamp Mix



Wall Mix



Smooth Coat



CONSOLIDATED AGGREGATES

SINCE 2003



APRIL 2025

www.consolidatedagg.com

A DIVISION OF
 **T.I.R.**
TURLEY INTERNATIONAL RESOURCES