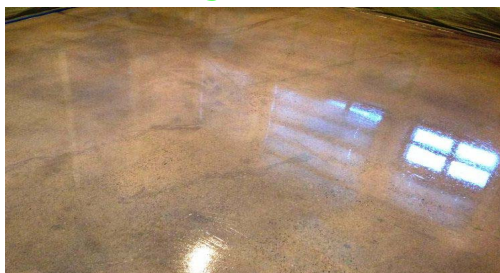


ENDURABLE

F1 SEALER™



- Matte or gloss finish
- Quick to dry
- Spray, roll, or micro-fiber application
- Safe for countertops
- Low VOC content and low odor
- Good chemical resistance
- Good durability
- Very easy to apply
- Good UV stability
- Good against hot tire pick-up
- Excellent product to use in conjunction with ENDURABLE CONCRETE SEALER. Application of product during recoat window over ENDURABLE CONCRETE SEALER results in rich look usually achieved with floor wax, yet yielding much longer term results

ENDURABLE F1 SEALER is great replacement for solvent-based sealers. Product has a low VOC content and is very easy to apply. The innovative chemistry used to create this sealer provides a product that lasts twice as long as most acrylics.

COVERAGE RATES: 300 – 800 square feet per gallon depending on porosity of surface.

PACKAGING: Concentrate that makes 1 gallon & concentrate that makes 2 gallons.

MIX RATIO: Mix sealer at a ratio of 1 part water to 1 part sealer. Product may be used without adding water. Eliminating water will speed dry time.

SHELF LIFE AND STORAGE: Product has a shelf life of a minimum of 1 year in original containers. Store product between 40 and 80 degrees Fahrenheit. Keep product free from excessive heat, moisture, and freezing.

WHERE TO USE: Concrete – garages, driveways, patios, walkways, countertops, etc., masonry, terrazzo, and natural stone. Product has good resistance to chlorine, making it an effective sealer on pool decks. This sealer is not recommended in applications where motor oils, hydraulic fluids, etc. may be applicable.

MAINTENANCE: Use mild detergent solutions, light vinegar solutions, or light ammonia solutions. Reseal as necessary – 2 to 5 years depending on traffic and usage. Routine buffing with a light pad on a low-speed buffer can help maintain an even sheen and a clean surface.

DURABILITY AND CHEMICAL TESTING AND PERFORMANCE RESULTS

Adhesion	ASTM D3359	Dry Tape	5A
Adhesion	Wet Tape (24 hr @ 70 degrees F)		5A
Adhesion	Wet Tape (100 hr @ 70 degrees F)		5B
Adhesion	ASTM D2197A	Dry Scrape	8
Immersion	ASTM D870	Water (24 hr @ 70 degrees F)	No Effect
Double Rubs	ASTM D4752	IPA	>100
Double Rubs	ASTM D4752	MEK	>100
Impact Resistance	ASTM D2794	Reverse, in-lb	>160
Gloss, 60 degrees	ASTM D523		>95
Hardness	ASTM D4366	Persoz, s	>150
Mandrel Bend	ASTM D1737	mm	3.2

APPLICATION INSTRUCTIONS: Mix 1 to 1 with water. Use a mixing drill and paddle. Product may be applied via pump sprayer with a conical tip that sprays at .05 to .15 gpm at 40 psi, airless sprayer, micro-fiber applicator, or roller. When applying over stain, it is recommended to spray the first coat to avoid movement of color residue. Coverage rates are typically between 300 and 500 square feet per gallon per coat on broom finished or textured concrete.

Smooth surfaces or subsequent coats will yield coverage rates of 500-800 square feet per gallon. **DO NOT OVER-APPLY.** This product should be applied thinly and evenly. Subsequent coats or low porosity surfaces will yield high coverage rates. Before application of sealer, make sure surface is free from dirt, oils, etc.

Two coats are usually sufficient, but applicator must determine the specific need. Three coats on textured concrete may help with maximum water resistance. Sealer should be applied between 40 and 90 degrees Fahrenheit. After applying the first coat, wait until the sealer is dry to the touch, usually 15 to 30 minutes, depending on temperature and air flow, and then subsequent coats may be applied. Subsequent coats typically take 20 to 40 minutes to dry, depending on temperature and air flow. After application, tools may be cleaned using soap and water. Light traffic is possible after 2 hours and heavy traffic is possible after 8 hours. The sealer will gain strength over the next few days after application and will reach full cure at 5-7 days. Avoid subjecting the sealer to freezing temperatures or moisture for 12-36 hours after application. Make sure substrate is dry before application. ENDURABLE CONCRETE STAIN may penetrate ENDURABLE F1 SEALER when mixed in acetone. When applying stain in acetone over sealer, apply lightly. Too much acetone will “cook” the sealer.

LIMITATIONS: Product should be applied in thin coats. Do not over-apply. Product must be applied to clean, dry substrates. It is recommended to apply to porous surfaces for longest-lasting results.

PRODUCT AVAILABILITY: Product is available at retail distributors around the world. Visit www.endurableproducts.com to find the nearest distributor.

SLIP RESISTANCE AND CLEANABILITY: The profile of the concrete will dramatically affect the slip-resistance. Aggressive finishes, such as broom-finished concrete, will yield the best coefficient of friction and will be slightly more challenging to clean. Smooth surfaces will yield a lower coefficient of friction but are easier to clean. If desired, additional slip resistance can be added to the sealer. 100 mesh polypropylene will work well and should be applied in the second coat. It is best to mix it into the sealer and then applied with a T-Bar or the additive can be broadcast into the sealer. It is also recommended to apply a third coat of sealer to completely encompass and protect the additive.

WARNINGS: Use with proper ventilation. May cause eye and skin irritation. If you experience headaches, dizziness, or watery eyes, you may wear a NIOSH TC-84 respirator during application.

WARRANTY: Evaluate whether this product is suitable for your intended application. Conditions of product use are outside of our control and vary widely, the following is made in lieu of all express or implied warranties of merchantability. Our only obligation and your only remedy is replacement of product, at the option of HDIP INC. In no case will HDIP INC be liable for any direct, indirect, special, incidental, or consequential damages including lost profits, goodwill, or business opportunity.

“The F1, for its pricepoint, is one of the best sealers I have used. It is easy to apply and it goes a long way. I am happy to no longer have to use solvent sealers that smell terrible and turn white months later.”
MARK SHERER - SPARKLEWASH OF PLACER COUNTY



All products are labeled with full instructions. Additional information may be found on technical data sheets available at our website: www.endurableproducts.com. You may also view helpful instructional videos available on the website.

ENDURABLE

CONCRETE PRODUCTS™

The website provides additional tips and techniques for the individual products. Color selections are also available on website.

www.endurableproducts.com

800-910-3120