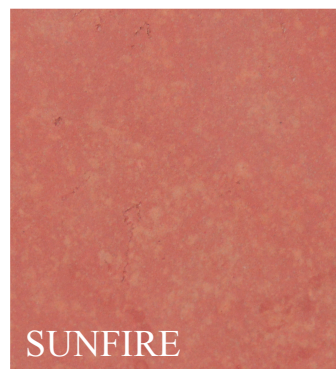
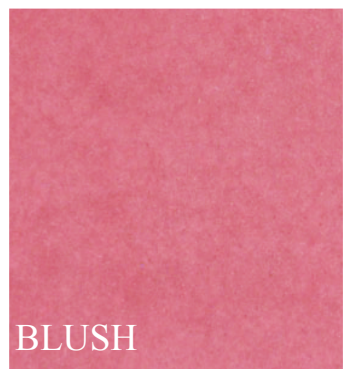
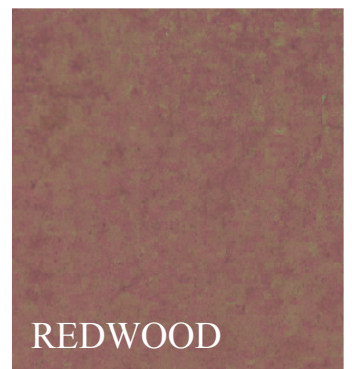
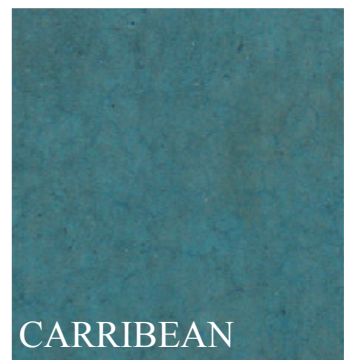


TRU IMPRESSIONS

By Waltools

TRU TINT DYE

Turns interior concrete into a beautiful, natural colored surface that exhibits an artistic and stylish appearance without the hassle of typical chemical stains



Tru Tint Concrete Dye is ideal for use on indoor concrete that is subject to high traffic exposure such as polished floors, countertops, interior overlays and micro toppings. Can also be used to modify previously colored or stained surfaces. The simple color pallet allows for custom blending as desired.

NOTE: Dyes are semi-transparent and will not cover or hide imperfections in the floor or surface being colored.

Tru Tint Concrete dye is an ultra penetrating, water dilutable, concrete dye to be used on textured, troweled or polished concrete. Tru Tint HD matches the performance of traditional solvent based dye systems while avoiding the dangers of dealing with highly flammable solvents. When dry, Tru Tint dye provides the same long term beauty as traditional dye.

SURFACE PREPARATION: All furniture, walls, or other items/areas you do not want dyed should be masked off properly using proper tape and plastic. Surfaces to be dyed should be free of dust, residue, and oil. Surfaces should be dry. For a polished surface such as a floor or countertop, initial grinding should be complete up to the 400 grit stage. Be sure to remove all dust and grind residue before proceeding to the dye stage. Overlayment surfaces or microtoppings may be optionally sanded lightly to ensure adequate absorption properties. Hard burnished floors may require an light etching treatment prior to application of dye for better absorption.

PRODUCT MIXING: Pour a full bottle of concentrate into a one gallon container or properly sized sprayer body. Add water to the one gallon measurement. No mixing is required. If using lesser amounts than one gallon, the end user must calculate the proper water addition based on the amount of concentrate used. Water is to be added at a rate of 8 parts water to 1 part dye. Tightly close any unused portion of the dye and store in clean dry area.

PRODUCT APPLICATION: **Always to a test spot in a inconspicuous area to verify results.** For spraying, put dye into a sprayer that has a good conical tip for fine spray. For housekeeping purposes, carry a rag or absorbent cloth along with the sprayer to place over the tip immediately after releasing the sprayer handle to catch and potential drips. With adequate pressure begin spraying dye onto surface holding the wand 12-24 inches from the surface being careful to overlap areas lightly. A circular motion works best to avoid pattern lines and bleed marks. If a more uniform finish is desired you may want to have a second person lightly work the dye into the surface with a soft split bristle brush. Do not allow to Puddle! Colors may be blended or additional colors may be applied with secondary coats over a base coat for an unlimited pallet of looks and finishes. Dry time will vary on absorption, porosity, temperature and air movement but in general most applications dry in 2 to 5 minutes. For polishing purposes you should wait at least 20 min for dry time. Once dry you can continue to polish to desired finish. If no more grinding/polishing is desired simply buff off any excess dyes with a damp cloth or white pad on a buffer before finishing with a proper sealer.

SEALING: It is recommended that all dyed surfaces receive some sort of sealed protection to maintain the color and finish. Tru Tint Dyes are compatible with all types of sealers. Suggestions are Tru Impressions Stampheen solvent or water base acrylics, or heavier coatings such as Epoxy HP, Polycoat Polysaspartic coating, or Acrithane 250. For the most natural finish use the application of TI Pro Tect or Tru Block will be appropriate.

Sprayers and tools should be thoroughly cleaned with soap and water **before** the dye dries. Acetone may be used to help break down the dye if it is left to dry.

- ▶ All new concrete should be cured for at least 28 days prior to application.
 - ▶ Dyes are intended to be used indoors only as organic dyes are subject to fade and uv degradation in direct sunlight.
 - ▶ Dyes should be tested on final surface to determine color results.
- If applying over an existing colored surface, proper adhesion and compatibility tests are essential. When using this product, the substrate preparation, application, performance and all other liabilities are strictly the end users responsibility. Walttools and it's affilitates offers no guaranty, warranty or other claims to the success or results from the use of this product. Walttools warrants the product to be free of defects and will replace or refund the purchase price of the product in the case that said products are proven defective. Any consequential damages including any labor costs are not covered by this warranty and are therefore not recoverable from the manufacturer or associated reseller.

