



# COLOR SELECTION GUIDE

*Proven Quality Since 1989*

- Endura Faux Fusion™

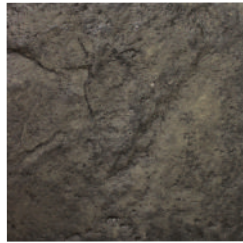
This color selection guide represents standard acid colors available in the Endura Faux Fusion™ product line.

Prior to use, please review the respective Technical Data Sheet, MSDS and training videos at [www.GetNewLook.com](http://www.GetNewLook.com).

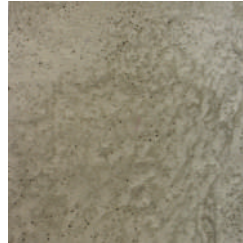
Endura Faux Fusion™ is a water-based nano-engineered semi-transparent stain that beautifies and enhances both exterior and interior porous concrete. It can be sprayed or brush applied to antique stamped concrete, create an acid look or faux finish with many color possibilities. It is formulated to be commercial grade yet easy to use. It may be applied with a NewLook applicator brush, HVLP airless sprayer, or other finishing tools making installation quick and controllable. Apply stain in various intensities with random motions to mottle the color. One or more colors may be used wet on wet or dry to achieve a color fusion. It is compatible with other NewLook products such as Endura Solid Stain™, SmartColor™, and TiqueWash™.



401 Black Fury



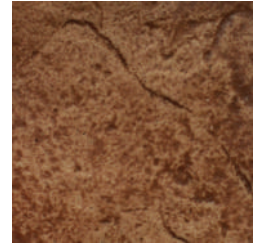
403 Rhino Gray



405 Yeti White



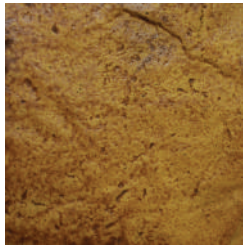
407 Sasquatch Brown



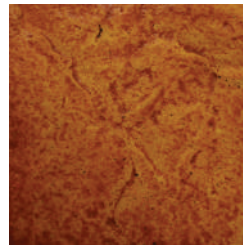
409 Mahogany Rose



411 Havana Brown



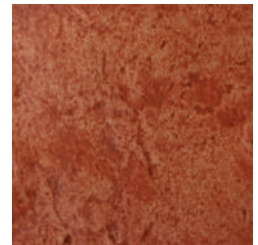
413 Egyptian Sand



415 Ancient Amber



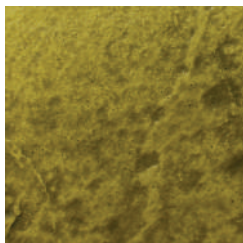
417 Tamarind Spice



419 Chipotle Red



421 Sparkling Cider



423 Russian Olive



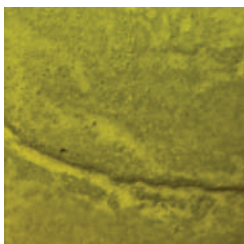
425 Python Green



427 Pistachio Marzipan



429 Mahalo Teal



431 Wild Flower Yellow



433 Samurai Red



435 Maui Orchid



437 African Violet



439 Poseidon Blue

Traditional acid stain colors available. Please contact your local distributor for product availability.

## PRODUCT COVERAGE\*

- Endura Faux Fusion™ (1 Quart) = 87 - 175 ft<sup>2</sup> (per coat) / 23 - 46 m<sup>†</sup>
- Endura Faux Fusion™ (1 Gal) = 350 - 700 ft<sup>2</sup> (per coat) / 23 - 46 m<sup>†</sup>
- Endura Faux Fusion™ (5 Gal) = 1,750 - 3,500 ft<sup>2</sup> (percoat) / 116 - 232 m<sup>†</sup>

The colors shown are approximate and, as close as possible, represent concrete with a stamped finish. NewLook International, Inc.™ cannot control (and is not responsible for) application methods, jobsite conditions, finishing techniques, curing methods or other jobsite variables and, therefore, cannot guarantee the final appearance, adhesion or an exact color match. Texturing or finishing techniques, such as brooming or troweling, the use of sealers and slight color-drifts in raw materials can produce variations in color. NewLook International, Inc. strongly recommends representative jobsite samples (mock-ups) prior to project installation. NewLook Concrete Color Stains are ideal for driveways, garage floors, pool decks, offices, restaurants, hotels, theme parks, shopping malls, walkways, schools and other high-traffic municipal areas.

\* Coverage is based on substrate porosity, moisture content, surface temperature and application method.  
<sup>†</sup> NewLook International, Inc. recommends a minimum of two coats for solid color stain products.