

BEAN•e•doo® Mastic Remover

Made with 100% American Grown Soybeans

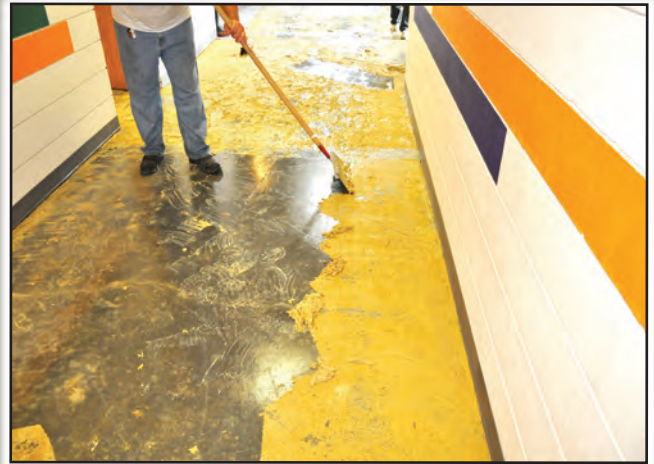
Safe Environmentally Friendly Mastic Remover



Recognized for Safer Chemistry
www.epa.gov/dfe



Remove asbestos mastic!



Remove carpet and
tile mastics!

Easy clean-up process!



Absorb with
Commercial Absorbent



Mop with Emerge™



Ready to Resurface!

No More Grinding!

No Dust • Work Without The Odor • Less than 3% VOC

"BEAN•e•doo® did the trick for us, with almost a 300% cost savings."

U.S. Postal Service

Over 3,000,000 sq. ft. Removed!



FRANMAR
Chemical®

1-800-538-5069

www.franmar.com



Product Data

Revised 5/14/2012



FRANMAR
Chemical

BEAN•e•doo®

Mastic Remover

Product Description

Easy to apply and even easier to remove and dispose of (land-fill friendly). 100% biodegradable, non-toxic and non-caustic—makes negative air, or other special equipment unnecessary. Very economical. Low evaporative rate allows it to continue to work for up to 24 hours. Allowing it to do the work saves labor. LESS LABOR = MORE PROFIT! After extensive testing, a U.S. Postal Authority said, "BEAN•e•doo does the trick, with money savings of almost 300%. Furthermore, it is unusual for only one product to meet all the criteria of the U.S. Postal Service."

Application

Due to variances in concrete surfaces and conditions, to determine dwell time and effectiveness, test in a small, inconspicuous area before using on complete project. Pour BEAN•e•doo Mastic Remover undiluted directly to the substrate. Use a long handled brush or broom to ensure BEAN•e•doo at least covers all trowel ridges. Allow BEAN•e•doo Mastic Remover to sit until mastic softens. (Generally 45-60 minutes for asbestos mastic. Dwell time for vinyl and latex mastics are longer.) After mastic has softened, remove with a long handled scraper or squeegee. Clean surface with Franmar's EMERGE™ degreaser or water and let dry before applying new mastic or coating. In all cases, care should be taken not to oversaturate the floor by using too much water. Rotary floor machines are not recommended for clean-up unless an area has been tested first. (See BEAN•e•doo® Mastic Remover Tip Sheet for more detailed instructions.)

For porous and/or cracked substrates, use a commercial absorbent to help in pick-up of mastic residue. Use a degreasing agent such as Franmar's EMERGE when mopping surface.

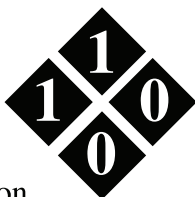
Testing surface for residue after floor has been mopped: Apply water to various small areas on the substrate and rub with fingers. If water turns cloudy white, it indicates there is BEAN•e•doo Mastic Remover remaining on the surface. Remopping with a degreaser is recommended. Then retest.

BEAN•e•doo Mastic Remover is not recommended for use on wood surfaces. Using BEAN•e•doo might slightly darken a concrete surface.

COVERAGE: One gallon will generally cover between 100-200 square feet. Many customers report getting up to 200 sq. ft. per gallon. Most contractors new to BEAN•e•doo Mastic Remover budget at 125-150 sq. ft. per gallon so they don't under estimate the job.

Properties

- Flash Point: Above 200°F
- pH Level: 6.65 pH of 1/10 wt/wt solution in soft water.
- Odor: Mild odor
- Packaged: Quart, Gallon, 5 Gallon, 55 Gallon Drum



VOC (Volatile Organic Compounds)
2.3% .06 lb/g 20 g/l

(to download full MSDS visit - www.franmar.com)

Usage Tips:

Do not exceed the recommended coverage. Applying too much BEAN•e•doo does not shorten removal time, but does contribute to impeding the complete removal of residue.

For thick mastics, reduce suggested sq. ft. coverage.

For best clean-up results, remove mastic with long handled scraper. Next use a commercial absorbent to ensure pick-up of mastic residue, and then mop floor using Franmar's EMERGE degreaser.

For indoor use only.