



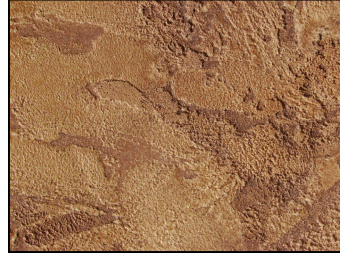
# Acrylic Transparent Concrete Stain



**20-62 Gray Slate**  
*Standard Color*



**20-65 Sedona Red**  
*Standard Color*



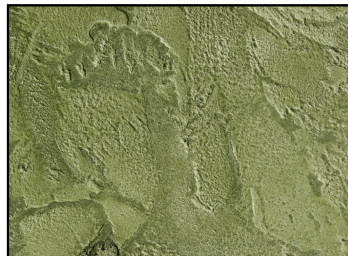
**20-64 Umber**  
*Standard Color*



**20-67 Sienna**  
*Standard Color*



**20-63 Sand Stone**  
*Standard Color*



**20-68 Green Slate**  
*Standard Color*



**20-71 Black**  
*Standard Color*



**Harvest**  
*Blend*



**Amber Ale**  
*Blend*



**Sage Brush**  
*Blend*



**Adobe**  
*Blend*



**Mint**  
*Blend*



**Clay**  
*Blend*



**Mesquite**  
*Blend*



**Gray Green**  
*Blend*



**Chamois**  
*Blend*

Colors formulated above are applied onto the Life Deck LD2 White Cement and are intended to provide an approximate representation. Your results may vary due to substrate density and color, application technique, moisture content, cure time and other variables.





# Acrylic Transparent Concrete Stain

**Life Deck Acrylic Stains are designed to create unique and rich color tones.**

**Life Deck concrete surfaces have unique texture, variations in color, and porosity.**

**The combination of Life Deck Acrylic stains and cements can give you unique color patterns that will accent your floor to give you a beautiful extraordinary look.**

## Harvest

20-65	Sedona Red	1 Part
20-68	Green Slate	1 Part
Water		2 Parts

## Mint

20-63	Sandstone	1 Part
20-68	Green Slate	1 Part
Water		2 Parts

## Adobe

20-65	Sedona Red	1 Part
20-67	Sienna	1 Part
Water		2 Parts

## Sage Brush

20-62	Gray Slate	1 Part
20-68	Green Slate	1 Part
Water		2 Parts

## Amber Ale

20-64	Umber	1 Part
20-68	Green Slate	1 Part
Water		2 Parts

## Chamois

20-63	Sandstone	1 Part
20-67	Sienna	1 Part
Water		2 Parts

## Gray Green

20-62	Gray Slate	1 Part
20-63	Sandstone	1 Part
Water		2 Parts

## Mesquite

20-67	Sienna	1 Part
20-68	Green Slate	1 Part
Water		2 Parts

## Clay

20-63	Sandstone	1 Part
20-64	Umber	1 Part
Water		2 Parts

## Colors to beautify and protect your floors

**All samples applied on LD2-White Cement color will be darker when applied on other substrates a thin coat of clear, such as 4001 Acrylic Urethane or LD2008 Acrylic Lacquer**

*Colors formulated above are applied onto the Life Deck LD2 White Cement and are intended to provide an approximate representation. Your results may vary due to substrate density and color, application technique, moisture content, cure time and other variables.*